



**New Forest**  
DISTRICT COUNCIL

**ENVIRONMENT &  
SUSTAINABILITY OVERVIEW &  
SCRUTINY PANEL**

**WATER SAFETY ON THE NFDC  
COASTLINE - UPDATE**

**January 2023**

# What are we doing?

Reviewing coastal sites within NFDC ownership or management (leased)

The LGA states that “Councils play a vital role in tackling water safety in their area.” As a coastal authority water safety is paramount in ensuring that the public remain safe whilst enjoying the water and that the Council fulfils its legislative responsibilities in providing support, guidance and the relevant equipment to areas in need.

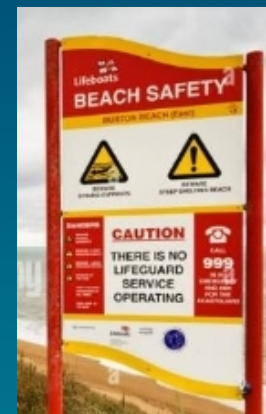
Work will include:

- Develop a “Coastal Water Safety Policy”
- Prepare a Keyhaven River Marine Safety Management System (MSMS)
- Identifying the coastal sites
- Undertaking risk assessment for each site
- Review site signage & public rescue equipment
- Implement findings of risk assessments & reviews of sites
- Review of inspection regime & roles
- Engaging with a competent supplier

# Why are we doing this?

## Review of coastal sites required

- Undertaken by H&S team supported by RNLI
- Review focused on main beach sites – Calshot, Hurst, MoS, Hordle & BoS
  - Did not include other coastal sites owned/managed by NFDC
- To consider any new or updated guidance/legislation
- This review did result in control measures being put in place at the beach sites
  - New and updated signage
  - Public Rescue Equipment installed



# Sites

There are a variety of sites across the district:

- Beaches
- Slipways
- Keyhaven River
- Quays
- Waterways
- Swim zone
- Structures
- Land adjacent to tidal water
- Completion by 31 March 2023



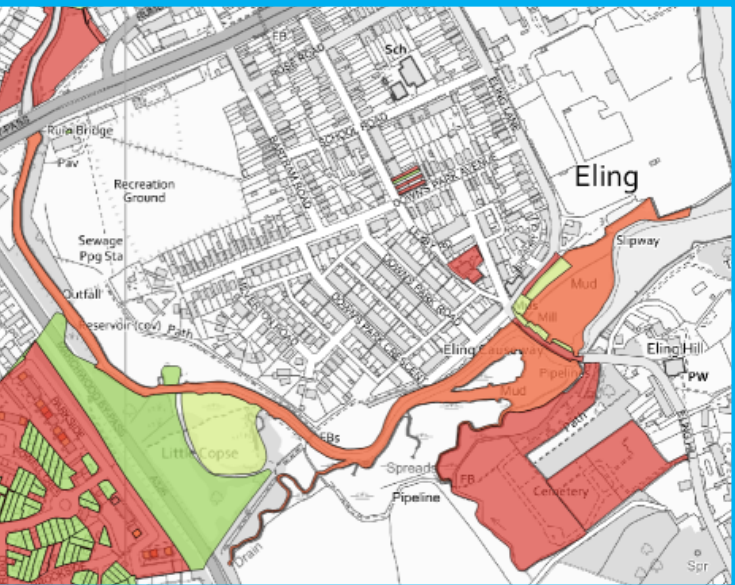
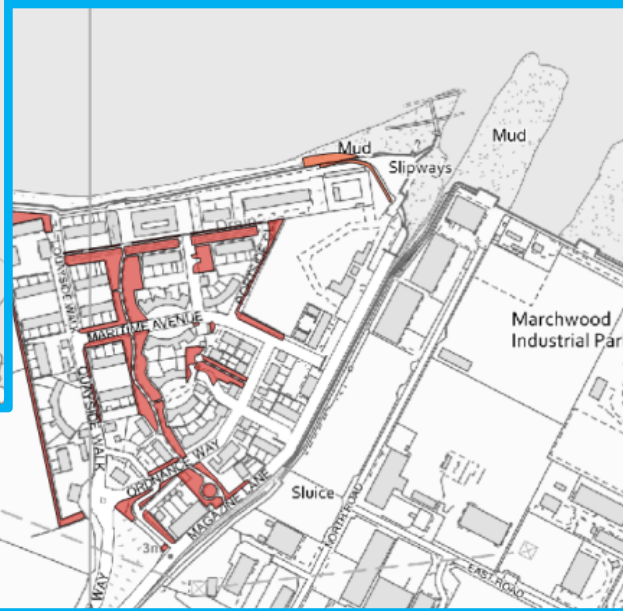
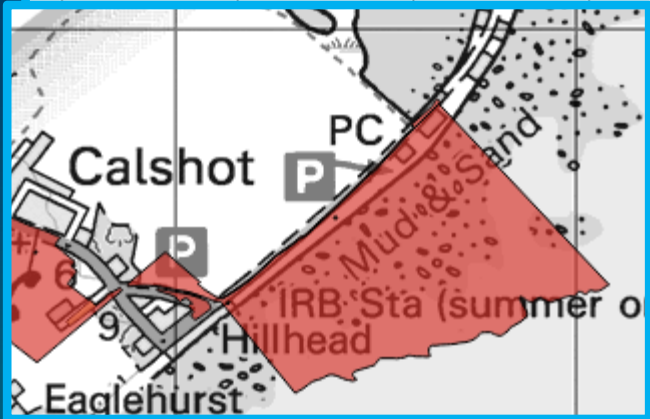
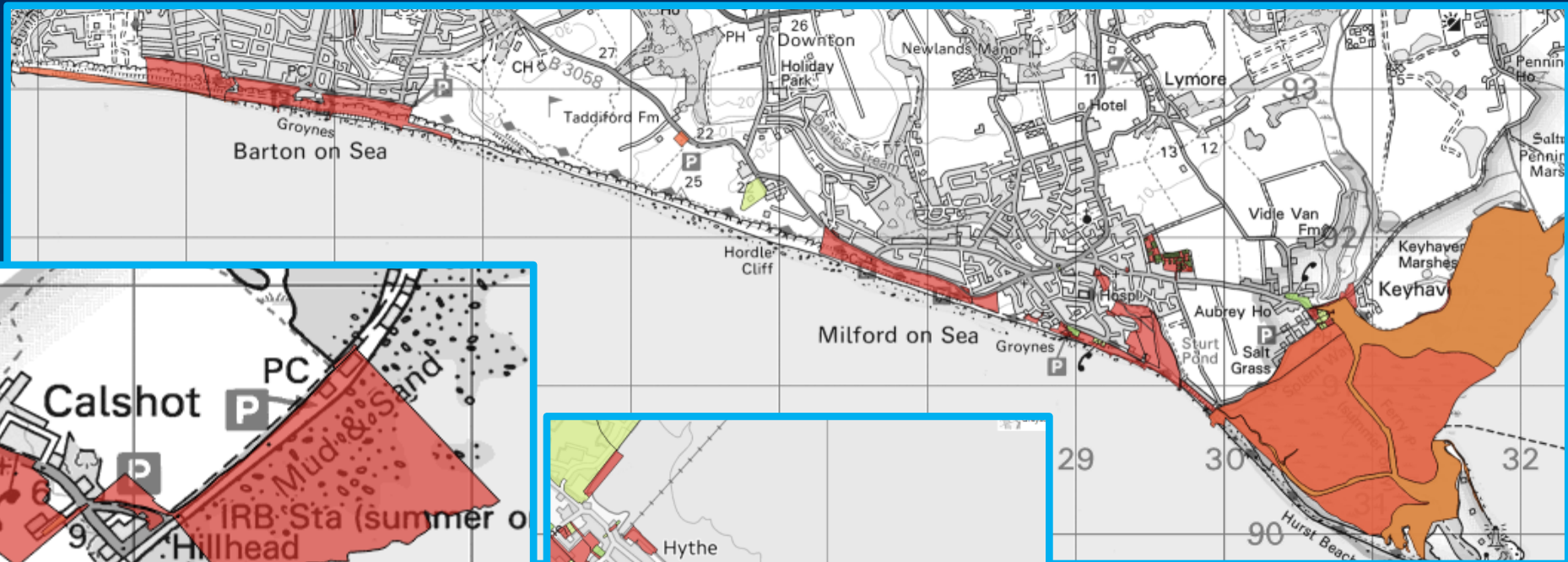
# Example Sites

## NFDC Ownership

Type	No. of Sites	Example Sites
Beach	4	Hordle, Calshot, MoS & BoS
Land adjacent to tidal water	13	Eling cemetery, Shore Rd, Hythe, Bath Rd, Lymington
Quay	6	Eling Lane, Eling. Quayside Walk, Marchwood. Lymington Quay, Keyhaven
Slipway	2	Keyhaven & Calshot

## NFDC Leased

Type	No. of Sites	Example Sites
Beach	2	Foreshore Hurst & Christchurch Bay
Land adjacent to tidal water	1	Bartley Water
Quay	1	Admiralty Quay, Marchwood
River	1	Keyhaven



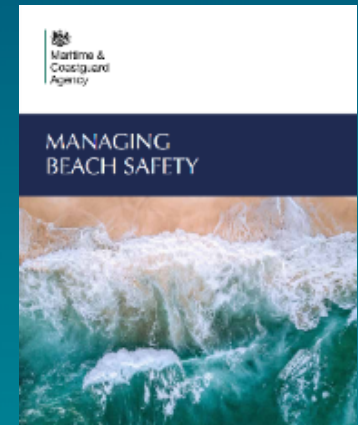
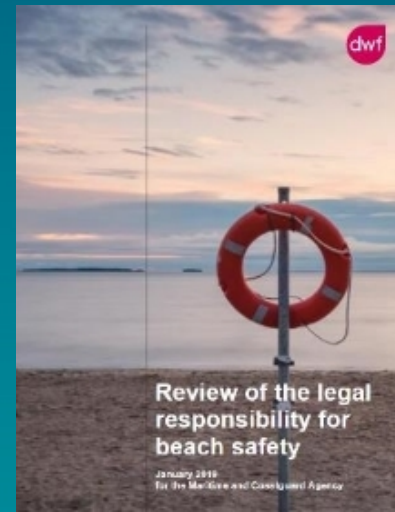
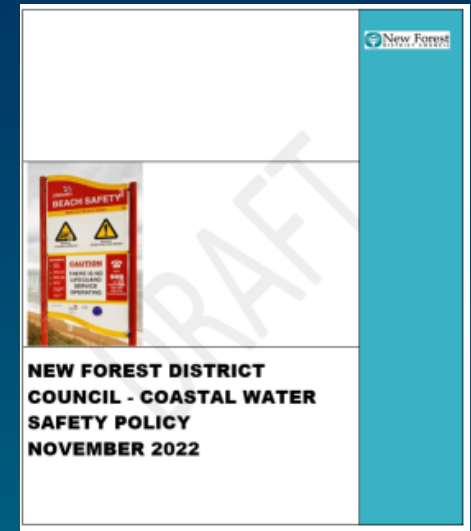
# Work Completed To Date & Next Steps

## Information Gathering:

- Identifying relevant guidance, e.g.
  - RNLI guidance for Public Rescue Equipment and signage
  - MCA – Managing Beach Safety
  - ROSPA – Local Authority Approaches to Managing Water Safety
- Draft Water Safety Policy being prepared
- Initial engagement with RNLI
- Identifying specific sites and associated hazards

## Next

- Appointment of RNLI as competent supplier to undertake site assessments– April/May 2023
- Water Safety Policy consultation and review
- Implement identified actions



# Work Completed To Date & Next Steps - Keyhaven

## Information Gathering:

- NFDC has a responsibility to ensure that the Keyhaven river management and operations comply with the Port Marine Safety Code (PMSC) .
- NFDC need to have in place a Marine Management Safety Scheme (MSMS) which ensures compliance with the PMSC wherever possible (Note: as we are NOT a statutory harbour authority it is 'recommended not mandatory')
- A suitable candidate for a 'Designated person' (DP) (ex-Yarmouth harbour master) has been identified to enable NFDC to reach the required standards.

## Next

- Appointment of 'DP' as consultant to be confirmed
- Audit by DP arranged for 17th January 2023
- MSMS approved by EMT
- Keyhaven Duty Holder (Strategic Director) confirmed as per MSMS



# Questions?

17/JAN/2012